

Creating a  
healthier world.

# Systematic Review of Community Contextual Factors and Modern Contraception use in Low-Middle Income Countries

---

By: Mahmooda Khaliq Pasha, MHS, CPH

Making Lifelong Connections 2015

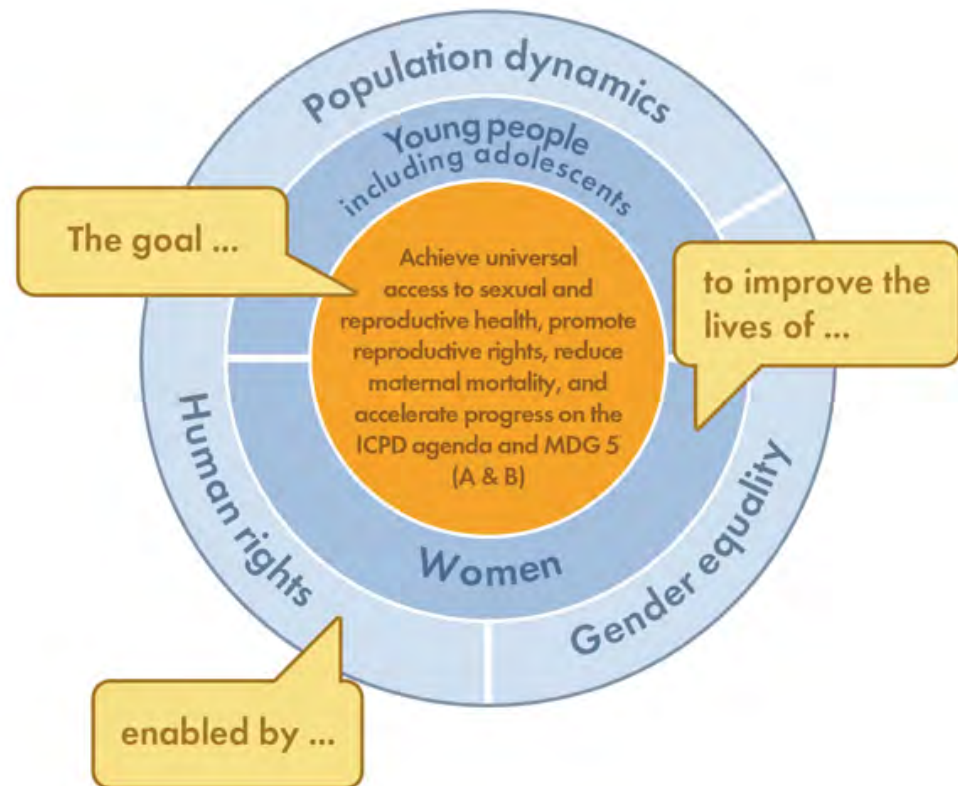
April 23, 2015

University of South Florida College of Public Health  
our practice is our passion.



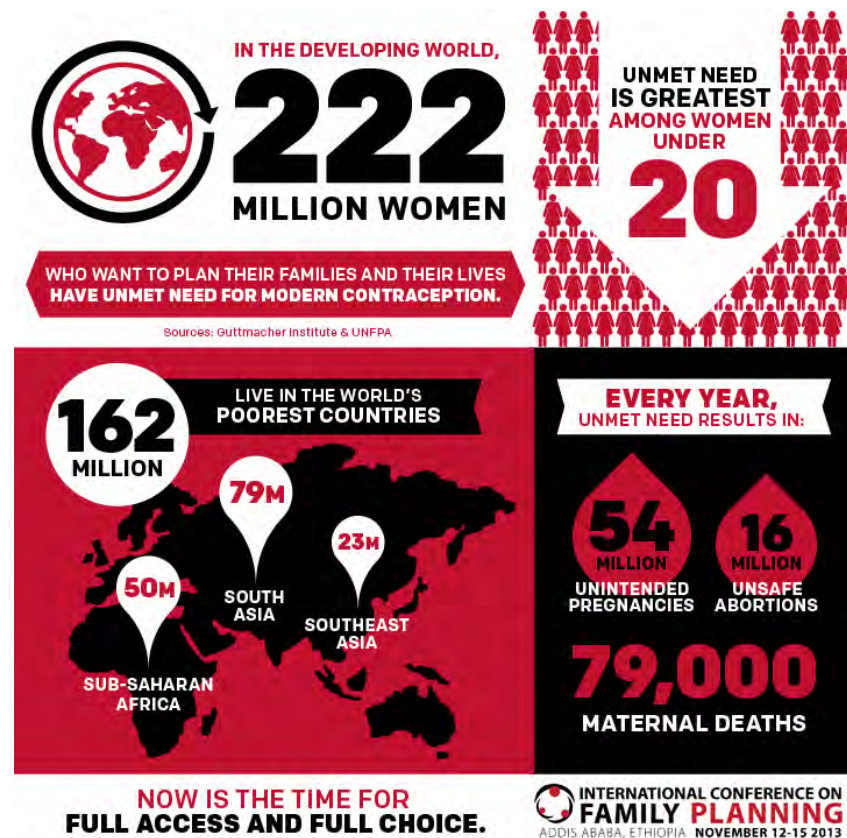
# Background

- Sexual & Reproductive Health Pillar of health and community
- Millennium Development Goals (MDG) – Goal 5/ Target 5B



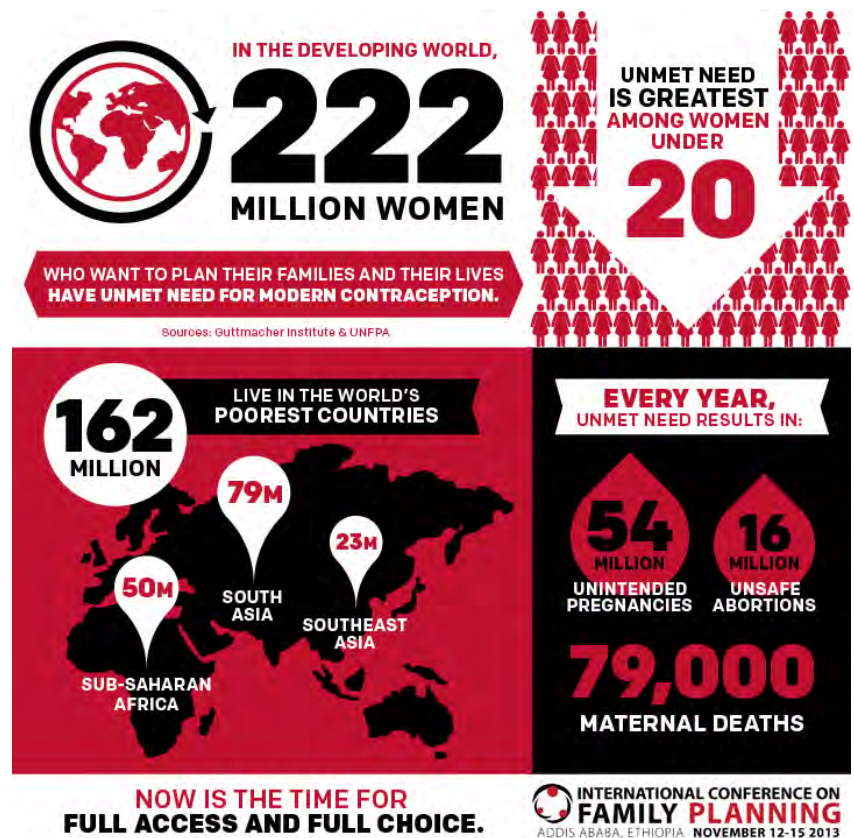
# Contraceptive Prevalence & Unmet Need

- Contraceptive Prevalence
  - 32% Modern Contraception
  - 11% Traditional Method
- Unmet Need for Family Planning
  - 220 Million women



# Why focus on family planning?

- 7.4 million DALYs prevented
- 58% reduction in maternal deaths
- 10% of childhood deaths averted
- Societal benefits



# Determinants of Contraceptive Use

- Determinants of Contraceptive Use
  - Age
  - Education
  - Wealth
  - Parity
  - Desire for children
  - Exposure to family planning program



# Community Contextual Factors

---

- Multilevel Modeling
  - Hierarchical data
  - Population-level vs. Individual-level
- Demographic Health Survey



# Systematic Review Purpose

**To examine how the Demographic Health Survey and multilevel modeling have been used to investigate community contextual factors and their impact on modern contraception use in low-middle income countries**

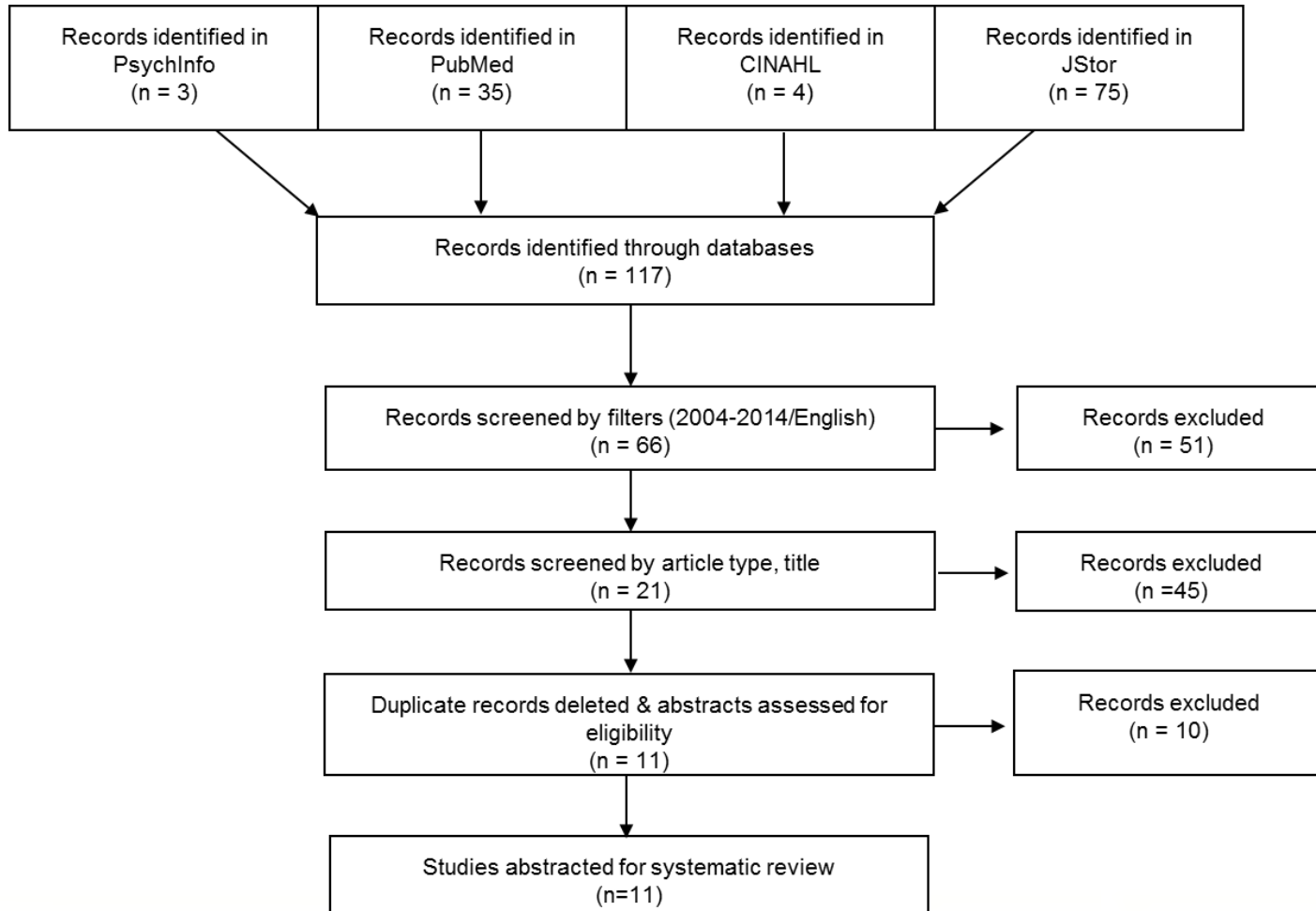


# Methods: Search Strategy

Main Domain		Search Terms
<b>Community Context</b>		((((((((((((familial factor*) OR cultural factor*) OR family characteristic*) OR contextual influence*) OR socioeconomic factor*) OR behavioral factor*) OR structural factor*) OR residence characteristic*) OR community influence*) OR cultural characteristic*) OR community factor*) OR community environment) OR community contextual
<b>Contraception</b>	<i>AND</i>	(((contracep*) OR reproductive behavior) OR modern contracep*) OR birth control) OR family planning
<b>Survey</b>	<i>AND</i>	Demographic health survey
<b>Statistical Method</b>	<i>AND</i>	Multilevel



# Methods: PRISMA Flow Diagram

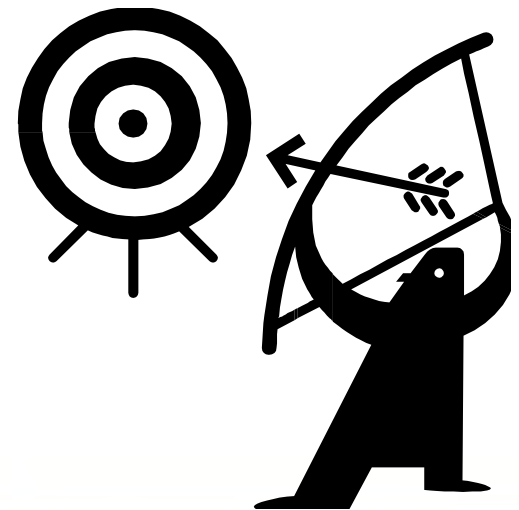


# Results

---

## Study Purpose

- Community Context (n=6)
- Geographical/spatial factors (n=3)
- Migration (n=1)
- Community & Healthcare infrastructure (n=1)



# Results

---

## Theory

- NO theory/conceptual framework used (n=6)
- Multidimensional Nature of Empowerment (n=1)
- Minority-Group Status Perspective (n=1)
- Theory of Fertility Decline (n=1)
- Lifecourse Framework (n=1)
- Diffusion of Innovation (n=1)



# Results

---

## Independent Variable – Individual/Household Level

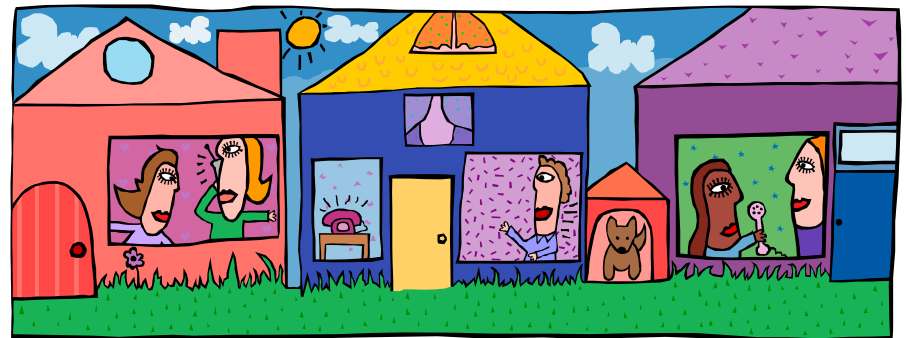
- Age
- Education
- Occupation
- Martial Status
- Number of living children
- Exposure to media
- Place of residence
- Religion
- Partner approval
- Wealth

# Results

---

## Independent Variable – Community Level

- Women approval of family planning
- Age at first sexual intercourse
- Community wealth
- Community education
- Ideal family size
- Media exposure



# Results

---

## Dependent Variable

- Modern contraception use (n=6)
  - Sterilization (n=1)
  - All except injectable (n=1)
- Knowledge of modern contraception (n=1)
- Unintended/mistimed pregnancy (n=2)

# Results: Countries Evaluated

---

- Africa (n=8)
  - 26 countries
  - Ghana (n=5)
  - Mali, Kenya, Tanzania, Nigeria (n=2)
- Latin America (n=2)
- Asia (n=1)



# Discussion: Future Direction



University of South Florida College of Public Health  
our practice is our passion.





# Discussion

---

- South Asia
- No theoretical basis
- Reporting on individual level
- **Next Steps:**
  - Longitudinal approach
  - In-depth analysis



Creating a  
healthier world.

# Thank you!

## Questions?

University of South Florida College of Public Health  
our practice is our passion.

